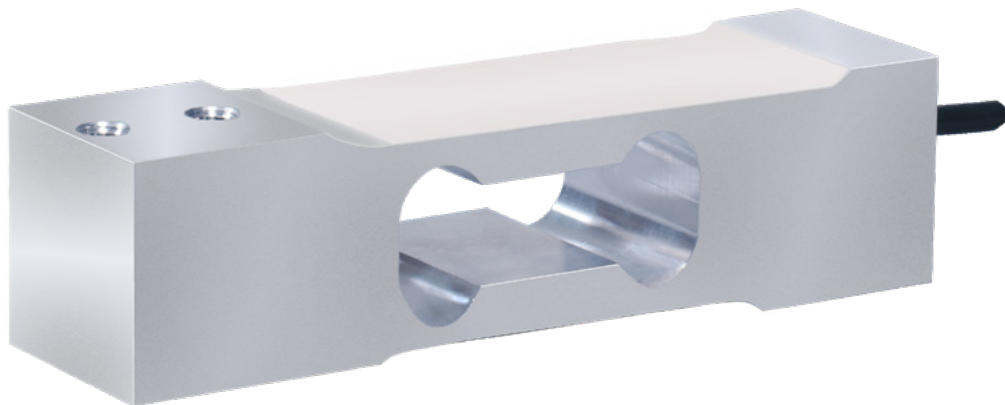


Single Point Load Cell AH with a Rated Load of 50 ... 200 kg

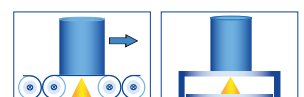


Performance Features

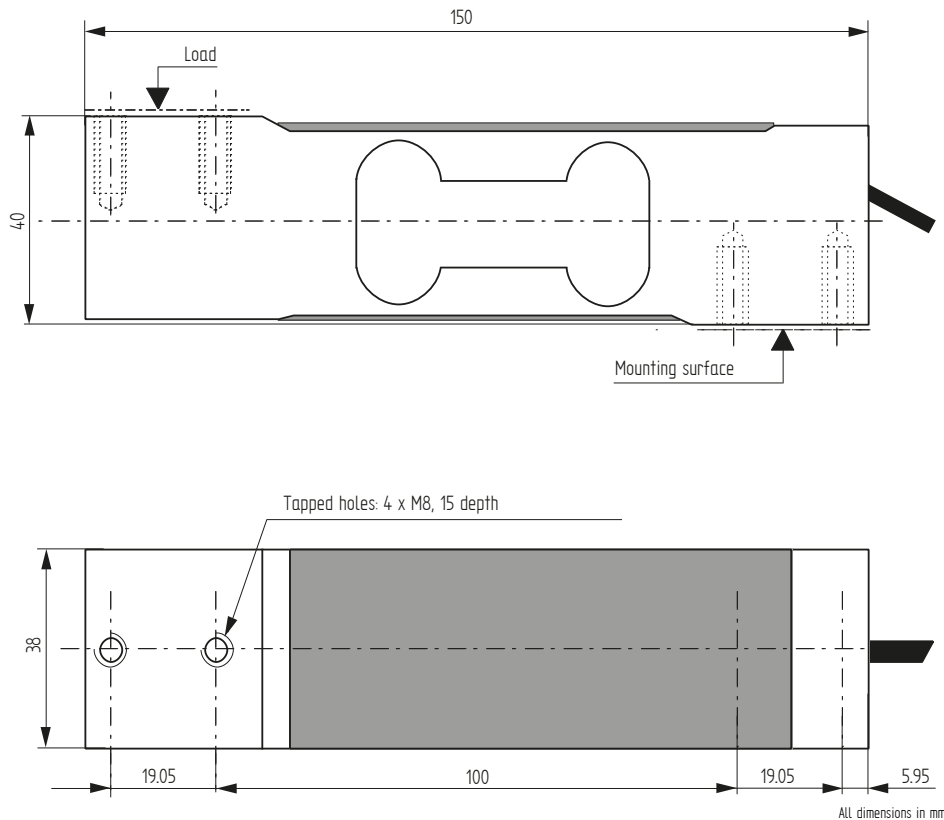
- Aluminum single point load cell
- 6000d OIML R60 approved
- Level of protection: IP65
- Designed for platforms of maximum dimensions 500 mm x 500 mm (off-center load compensated)
- Low profile design
- ATEX 2014/34/EU version for hazardous area (option)

Application

- Food industry
- Coal and steel industry
- Chemical/pharmaceutical industry
- Waste management/recycling
- Packaging technology



Dimensions in mm



Article-No.	Version	Rated load [kg]
100215	C3 5e	5
100298	C3 10e	10
101076	C3 10e	15
100300	C3 10e	20
101077	C3 10e	30
100302	C3 10e	50
100889	C3 10e	75
100304	C3 10e	100

Connection Assignment

Electrical Connection

Function	Wire Color	
Excitation (+)	Brown	●
Signal (+)	Yellow	●
Signal (-)	White	○
Excitation (-)	Green	●
Sensing (+)	Gray	●
Sensing (-)	Pink	●

Technical Data

Type	AH		
Version		C3 10e	C6 10e
Rated load E	kg	50; 100; 200	50; 100; 200
Maximum load for approved weighing E_{max}	kg	50; 100; 200	50; 100; 200
Accuracy class OIML R60		C3	C6
Maximum numbers of load cell intervals n_{max}	d OIML	3000	6000
Minimum verification interval v_{min}	g	5; 10; 20	5; 10; 20
Creep division factor $Z = E_{max}/2 \times DR$		3000	6000
Combined error	% E	±0.017	±0.008
Temperature coefficient of zero signal	% E/°C	±0.0014	±0.0014
Temperature coefficient of characteristic value	% E/°C	±0.0014	±0.0007
Load creep d_{cr, F} in 30 min.	% E	±0.025	±0.012
Zero balance	% E		±10
Rated characteristic value C_{nom}	mV/V		2 ±10 %
Rated range of excitation voltage B_{U, nom}	V		1 ... 15
Input resistance R_e	Ω		410 ±20
Output resistance R_a	Ω		350 ±5
Insulation resistance R_{is}	MΩ/50V		1000
Electrical connection			Cable, PVC, 3 m
Rated temperature range B_{T, nom}	°C		-10 ... 40
Operating temperature range B_{T, G}	°C		-20 ... 60
Limit load E_{lim}	% E _{max}		150
Breaking load E_b	% E _{max}		200
Tightening torque	Nm		15
Maximum platform dimension	mm		500 x 500
Level of protection			IP65
Material			Aluminum
Weight			0.6

Options

Article-No.	Description
111735	Protective coating
107798	ATEX 2014/34/EU, IECEx: ex II 1 G/D, Ex ia IIC T6 Ga, Ex ia IIIC T80 °C Da, IP6X, -20 °C < Ta < +60 °C (zones gaz 0/1/2, dust 20/21/22)
115049	ATEX 2014/34/EU, IECEx: ex II 1 D, Ex ta IIIC T125 °C Da, IP6X, -20 °C < Ta < +60 °C (zones dust 20/21/22)
115048	ATEX 2014/34/EU, IECEx: ex II 3 G, Ex nA IIC T6 Gc, -20 °C < Ta < +60 °C (zone gaz 2)

Accessories

Electrical Connection

Article-No.	Description
10323	Male cable connector KS6 (6-pin, Series 581) incl. mounting
10320	Male cable connector KSSH15 (15-pin) incl. mounting
43418	Input connector ZA9612FS (ALMEMO) incl. sensor mounting and connector calibration
49205	Input connector ZKD712FS (ALMEMO 202) incl. sensor mounting and connector calibration

Accessories (continued)

Weighing Electronics

ALCJB-A	CPJ/CPJ2S	IPE50 Panel
 The image shows a white plastic terminal block with two rows of screw terminals. The top row has four terminals and the bottom row has four terminals. A green printed circuit board (PCB) is partially visible inside the block, showing electronic components and solder points.	 The image shows a green plastic terminal block with a vertical orientation. It has a single row of screw terminals on the front face. The block is labeled 'CPJ' on its side.	 The image shows a black and blue industrial panel. It features a red LED display showing the number '30.000'. Below the display are several control buttons and indicators. The panel is labeled 'IPE50'.

Further suitable accessories you can find on our homepage under:

https://www.lorenz-messtechnik.de/english/products/lc_weighing-electronics.php